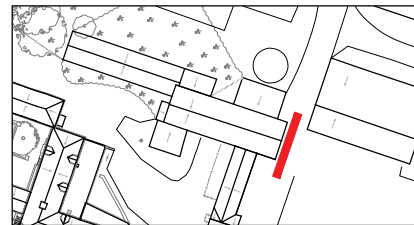
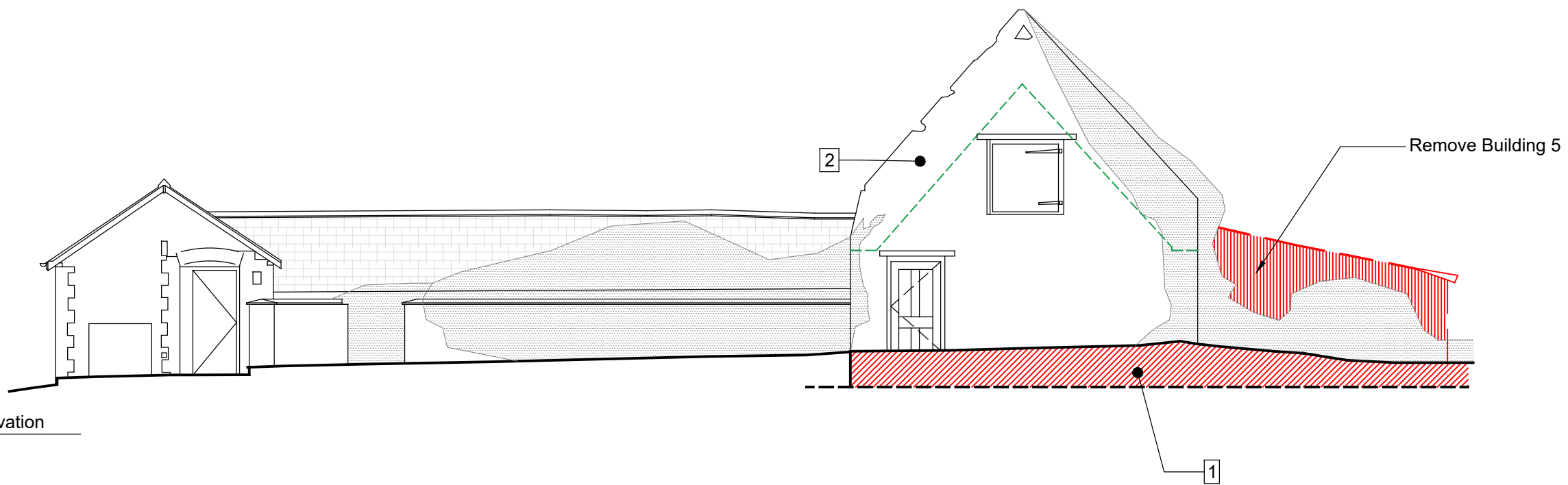
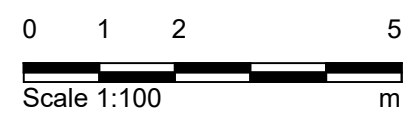


1 East Elevation
5202 1:100



© Crown copyright and database rights 2026 OS 100023251
You are not permitted to copy, sub-license, distribute or sell any of this data to third parties in any form.



- Notes**
- All dimensions in metres unless noted otherwise. All levels in metres unless noted otherwise.
 - Based upon Greenhatch Group Survey, August 2021, supplied by Cuvette.
 - To be read in conjunction with:
 - Document series 2.14 (Listed Building drawings)
 - Document 2.16B (Central Hub Proposed Site Plan)
 - Document 2.17B (Central Hub Demolition Plan)
 - Document 5.5B (Central Hub Design Approach Document)
 - Other Design Team's Information, including (but not limited to) Architect for Wider Scheme, Structural Engineer, Building Surveyor, Landscape Architect & Planning Consultant.
 - All other surveys and site information, as they become available.

- Fabric Removal East Elevation Notes:**
- Reduce unoriginal structures/ ground levels to facilitate level access around structure.
 - Dismantle top 1m of wall and rebuild to provide bearing for roof.

- Key:**
- Existing
 - Demolition
 - Dismantled/ Repaired/ Reinstated

CONTENT OF DRAWING IS BY DONALD INSALL ASSOCIATES
Notes

- Any dwg format drawing is to be read in conjunction with and at the scale of the accompanying pdf.
- Where colours other than black or grey are used, the drawing must be plotted in colour.
- For status 'C' (Construction) drawings all dimensions are to be checked on site by the contractor, scaling is for Local Authority purposes only.
- Unless otherwise indicated, all dimensions are in millimeters.
- All information on this drawing is to be read in conjunction with the relevant Donald Insall Associates specification and trade contractors' drawings and information by specialists.
- In the event of any discrepancy, please contact us immediately.
- This drawing may contain survey information by others and is to be used solely for the purposes for which it was issued.
- These are uncontrolled documents issued for information purposes only. If you have any queries regarding the drawings, please contact DIA immediately.
- Please note DIA cannot be held responsible for any errors arising from changes made to an uncontrolled dwg file.

© 2025 DONALD INSALL ASSOCIATES LTD

P.01	16.05.25	Issued for consent	SXI	CXB	CXB
Rev	Date	Details of issue / revision	Drw	Ch'g	Apr

Issues & Revisions



THE OXFORDSHIRE STRATEGIC RAIL FREIGHT INTERCHANGE AND HIGHWAYS ORDER 2026

Drawing Title
CENTRAL HUB - FABRIC REMOVAL - EAST ELEVATION

Regulation:	5(2) (m)	Document:	2.14W
Drawn:	SXI	Checked:	CXB
Approved:	CXB	Date:	16.05.25
BWB Ref:	NTH2479	Scale@A3:	1:100

Project - Originator - Functional Breakdown - Spatial Breakdown - Form - Discipline - Number
OxSRFI-DIA-ZZ-ZZ-DR-A-05202

Drawing Status	Rev
S5 - SUITABLE FOR PLANNING	P01